

ATX – S Sensor Range



Miniaturized Wireless Temperature & Vibration Sensors / Data Loggers

Product Brief:

ATX-S Range of Miniaturized Wireless Temperature & Vibration Sensors, are ideally suited for a wide range of use cases due to its precision, simple construction, robustness & versatility of functionality:

- ATX-S range uses advanced low power temperature & vibration transducers with Bluetooth 5 BLE technology.
- Best suited for long range applications & congested setups.
- Works with the ATX-GW gateway device; can be clustered with up to 20 sensors at the same time.
- Can function in standalone beacon mode.
- Pre-integrated with **StellarAi**.

Craidlr Mobile App:

For Android & iOS

Battery:

Up to 2 Years

Long Range:

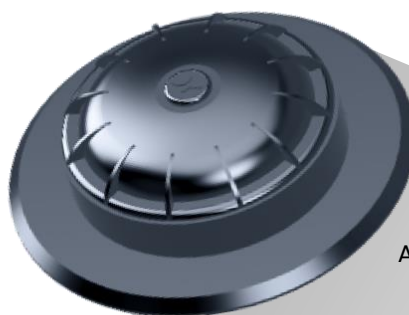
150Meters

Housing:

IP65

Multiple Mounting Options:

- Detachable with Holder
- Magnetic
- With Screw
- Pasting



ATX-S Sensor

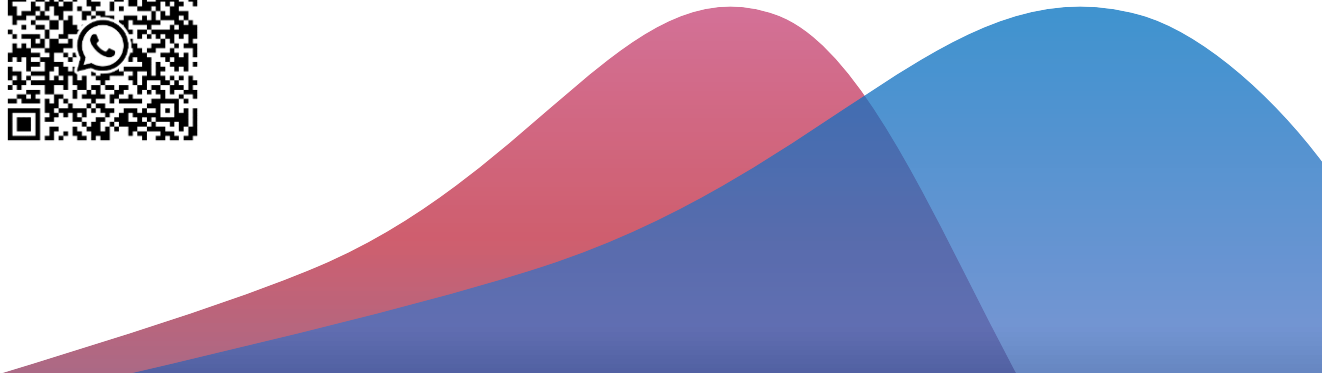
Access the Inaccessible Points!



Technical Specifications:

Product Variant		ATX -SL	ATX-ST	ATX -SV
Battery Life		3 Years	3 Years	1 Year
Bluetooth	2.4 GHz - BLE 5	◆	◆	◆
Operating Temperature	-40 °C to +125°C	◆	◆	◆
Ingress Protection	IP 65	◆	◆	◆
Temp. Measuring Range	-40°C to +125°C	◆	◆	◆
Temp. Accuracy	+/- 0.5°C	◆	◆	◆
Data Logger (Optional)	Max 100,000 Data Sets	◆	◆	◆
Transmission Range	150 Metres Open Field	◆	◆	◆
Transmission Frequency	0.1 to 30 Sec Programmable	◆	◆	◆
Connected Mode Range	15 Meters Open Field (Supports Schedule Mode)	◆	◆	◆
Certifications	CE & ROHS (In Process)	◆	◆	◆

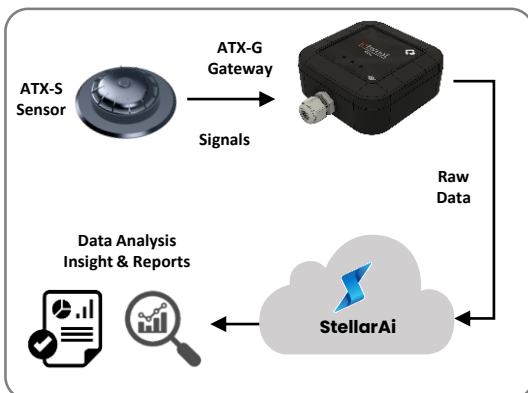
Scan to get in touch



Product Brief:

The Craidlr ATX-G gateways are a part of the Surface temperature & vibration Monitoring Solution for a Wide use cases in Automotive Testing Requirements.

The Real time Data Collection using the Beacon Mode from Craidlr ATX series Sensors or supporting the Data Transfer in Connected mode to collect the Logged Data from the sensors the gateways offers a wide choice of use cases making it easy to implement



Data Flow



ATX-G Gateway

- Connectivity : WiFi / CAN (Future)
- Cluster Capacity : 20 ATX-S Sensors
- Housing : IP65
- Physical Interfaces : PVC Cable Glands
- Mounts : Bolt Mounts
- Configuration : Built-in Web Page / Cloud SYNC to StellarAi
- Datalogger : Web-accessible
- Data Analytics : Automated Data Analysis via DriveTech's StellarAi Platform

Technical Specifications:

Product Variant		ATX - GW	ATX - GG	ATX - GC
WiFi		◆	◆	◆
GSM			◆	
CAN (Future)			◆	◆
Bluetooth	2.4 GHz - BLE 5	◆	◆	◆
Operating Temperature	-40 °C to +85°C	◆	◆	◆
Ingress Protection	IP 65	◆	◆	◆
Power Supply	10V to 30 VDC	◆	◆	◆
Memory Storage	- Internal Storage for 10,00,000 Data Sets for each sensor - SD Card for Additional Storage	◆	◆	◆
Basic Visualisations	Via Web-accessible Data Log	◆	◆	◆
Advanced Data Analytics	DriveTech StellarAi Platform	◆	◆	◆
Certifications	CE & ROHS (In Process)	◆	◆	◆

Scan to get in touch

